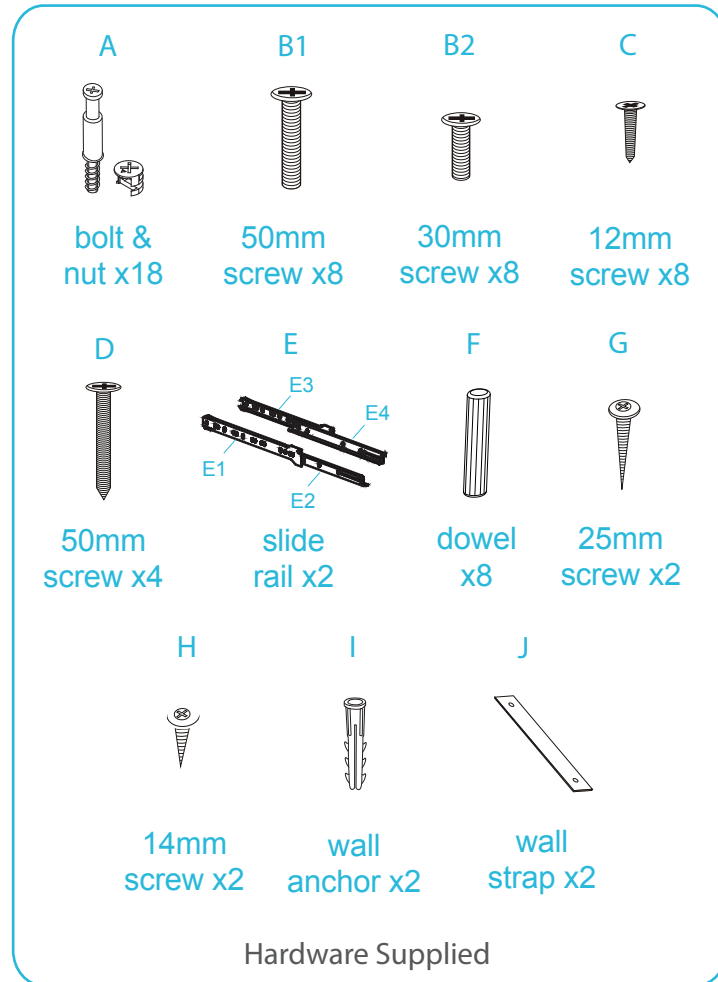


Parker Bedside Table

Assembly Instructions

Thank you for your purchase.
Please follow the instructions below for correct assembly.

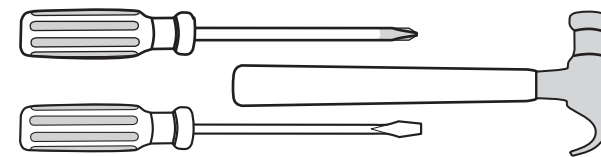
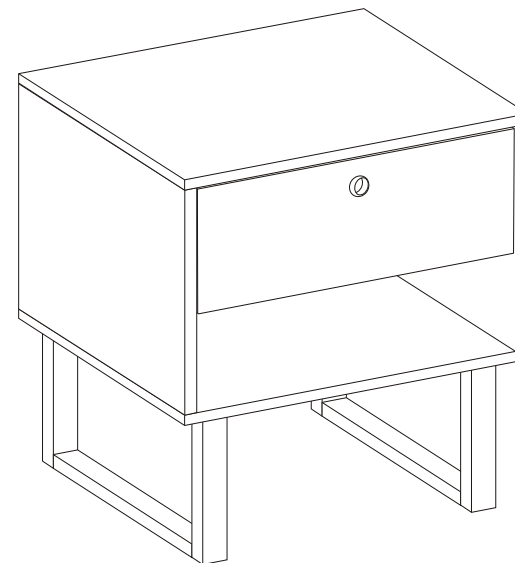


*We recommend using a Flathead screwdriver to tighten all locking nuts 100% before first use.
Please clear any loose wood from the locking nut holes before inserting the nut to ensure it locks 100%.

mocka.co.nz | mocka.com.au

mocka

WARNING: Any furniture that is not anchored to a wall has the potential to tip over in certain circumstances, i.e. if a child attempts to climb up on the furniture or in the event of an earthquake. Accordingly, we recommend that all furniture is anchored to a wall. We supply a free safety wall anchor with all furniture sold and we recommend these are used to prevent your product tipping. The fixing device provided should fit most wall types, but please note that different wall materials may require different fixing devices from those supplied.



Phillips & Flathead screwdrivers and hammer required

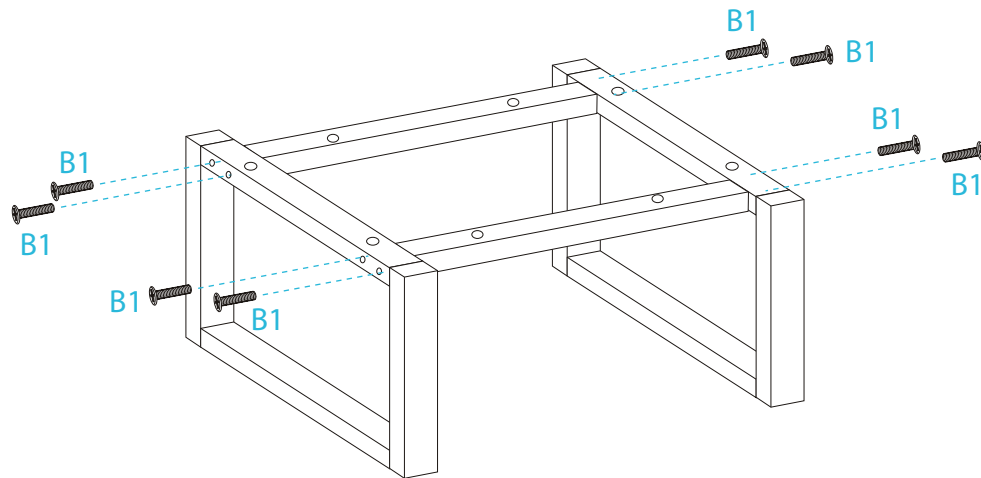
For quicker assembly, we recommend the use of a power drill on a low-speed setting.

Parker Bedside Table

Assembly Instructions

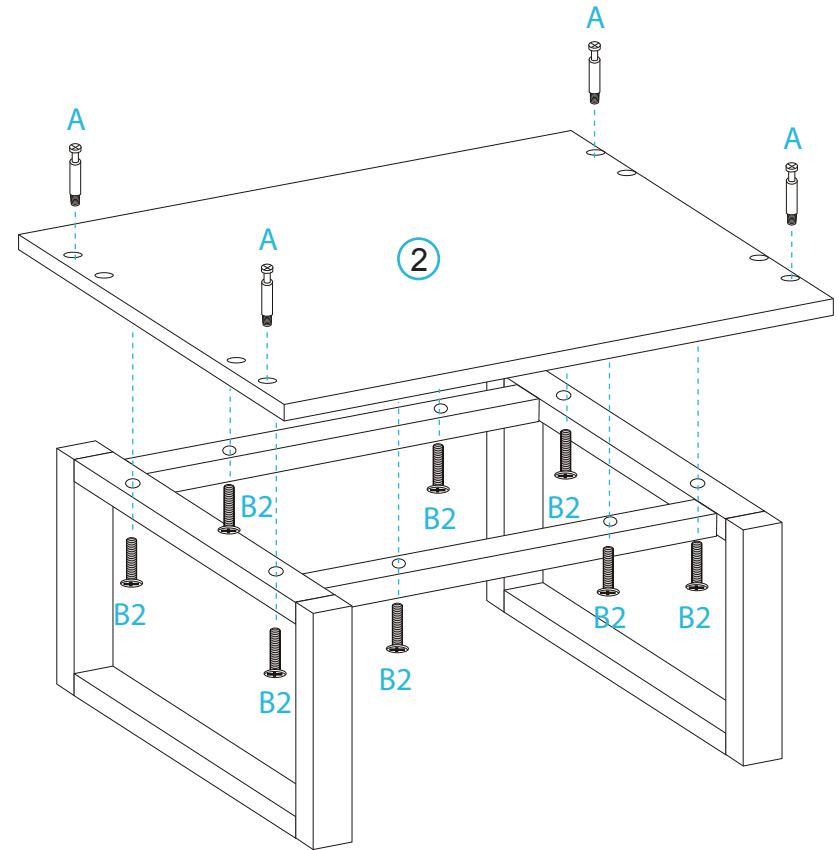
mocka

1



Attach the leg panels together as shown using 8x 50mm screws (B1). Tighten with a screwdriver.

2



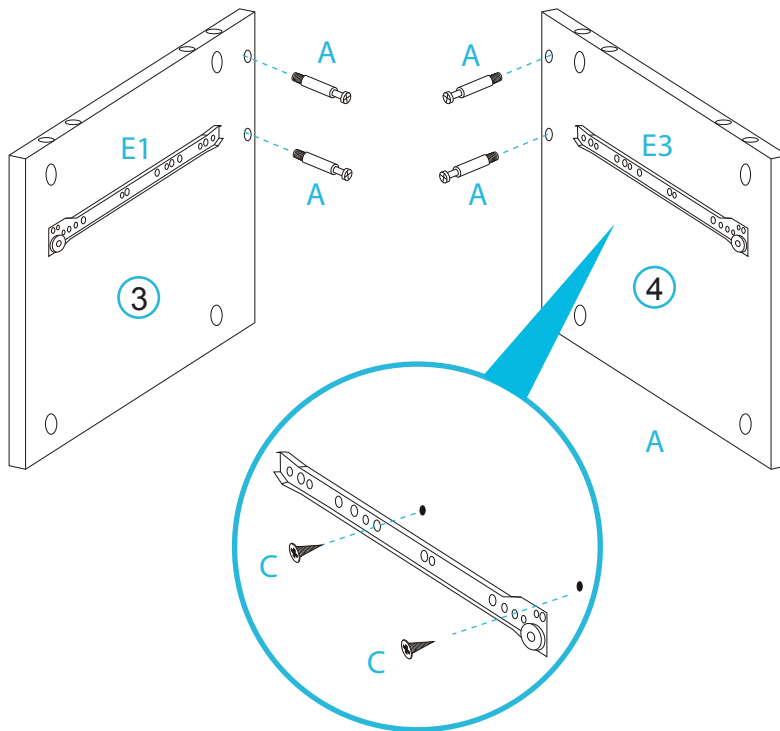
Attach panel [2] to the legs using 8x 30mm screws (B2). Tighten with a screwdriver. Insert 4x bolts (A) into panel [2].

Parker Bedside Table

Assembly Instructions

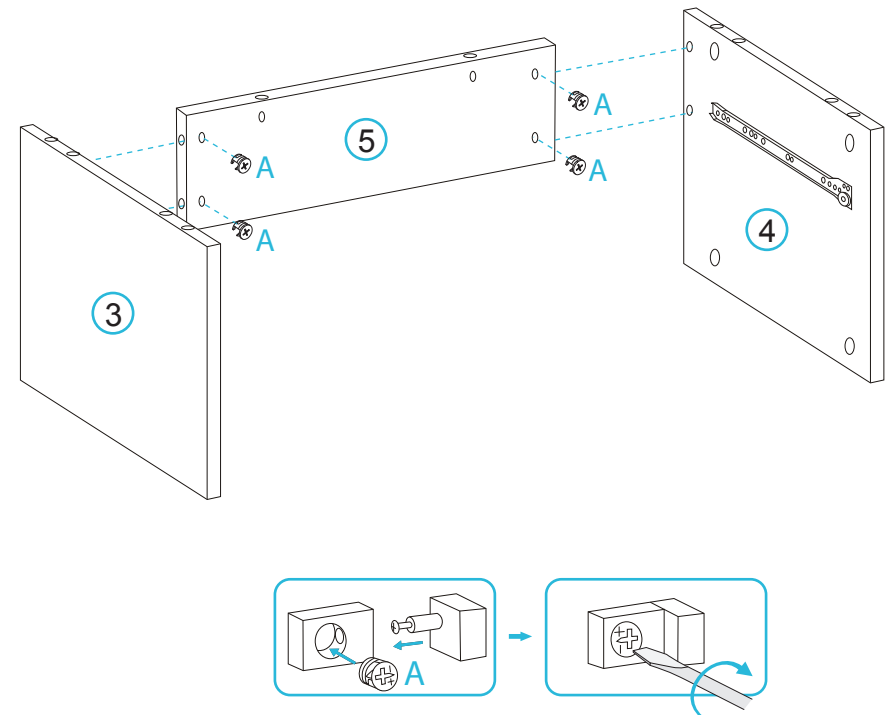
mocka

3



Insert 2x bolts (A) and attach 1x slide rail (E1) to panel [3] using 2x 12mm screws (C). Insert 2x bolts (A) and attach 1x slide rail (E3) to panel [4] using 2x 12mm screws (C). Tighten with a screwdriver.

4



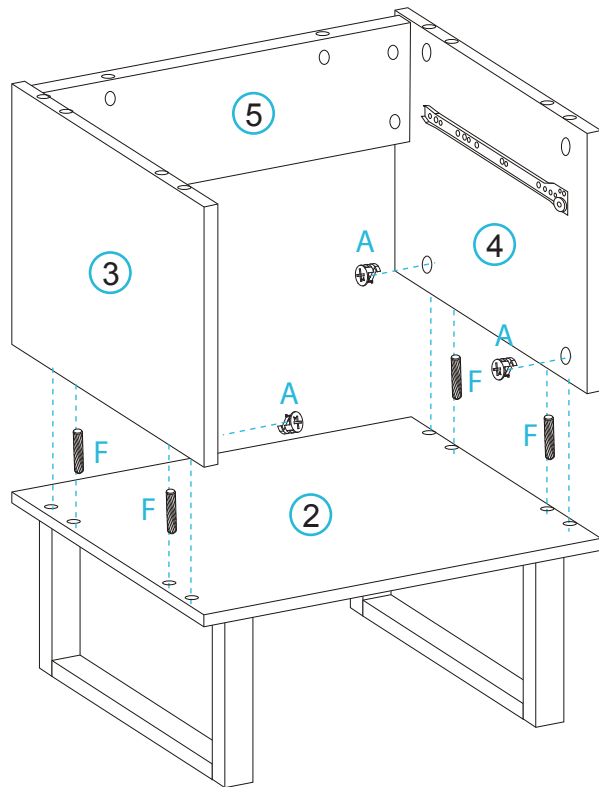
Attach panels [3], [4] and [5] together using 4x locking nuts (A). Tighten with a screwdriver.

Parker Bedside Table

Assembly Instructions

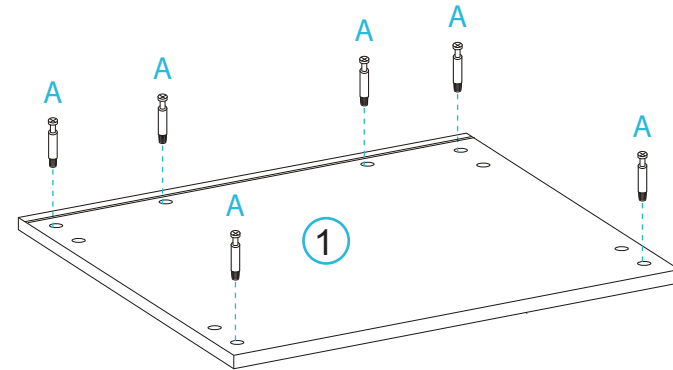
mocka

5



Attach panels [3], [4] and [5] to panel [2] using 4x dowels (F) and 4x locking nuts (A). Tighten with a screwdriver.

6



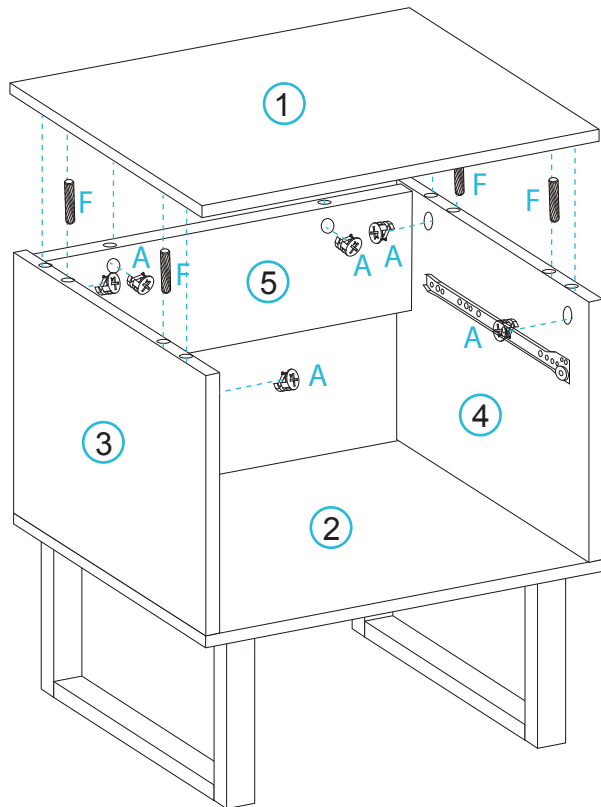
Insert 6x bolts (A) into panel [1].

Parker Bedside Table

Assembly Instructions

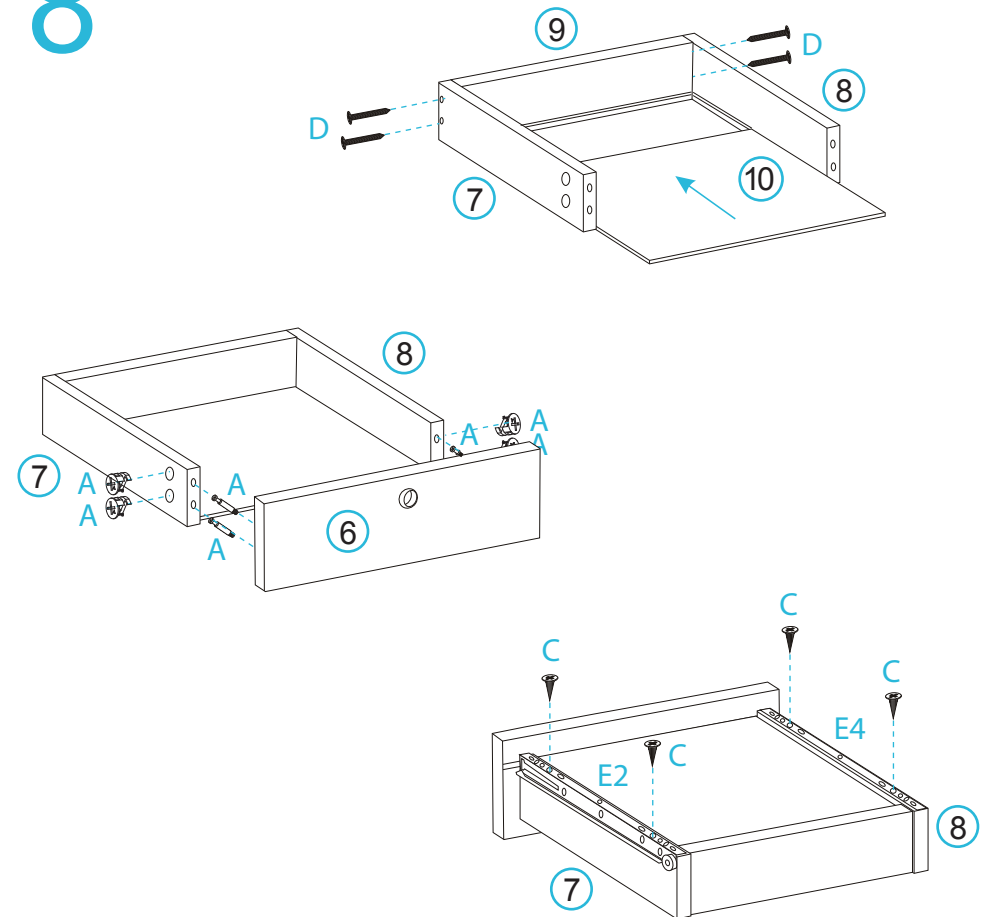
mocka

7



Attach panel [1] to panels [3], [4] and [5] using 4x dowels (F) and 6x locking nuts (A). Tighten with a screwdriver.

8



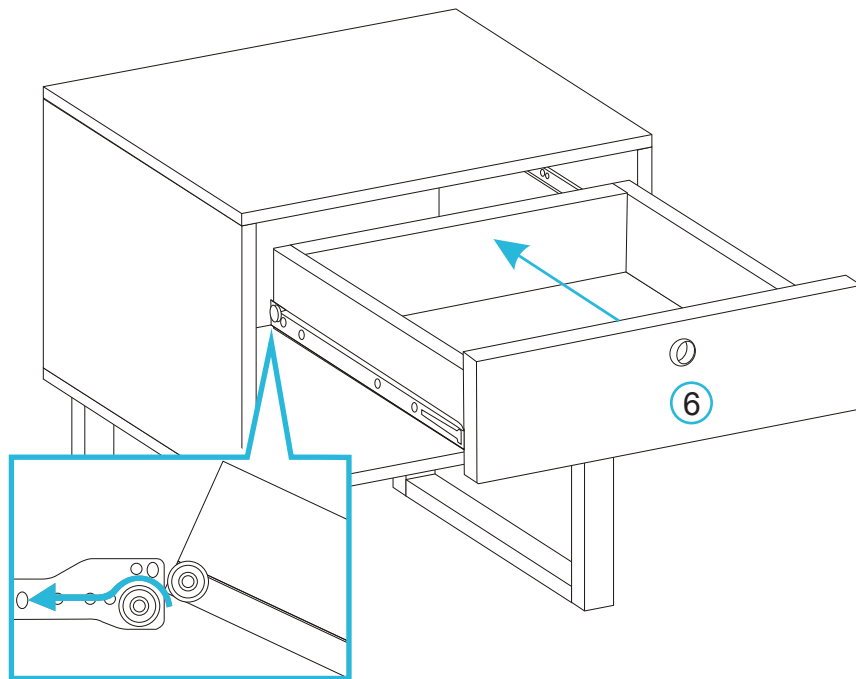
Attach panels [7], [8] and [9] together with 4x 50mm screws (D). Slide panel [10] along the grooves between panels [7] and [8]. Attach panel [6] to panels [7] and [8] with 4x nut and bolt sets (A). Attach 1x slide rail (E2) to panel [7] and 1x slide rail (E4) to panel [8] using 4x 12mm screws (C). Tighten with a screwdriver.

Parker Bedside Table

Assembly Instructions

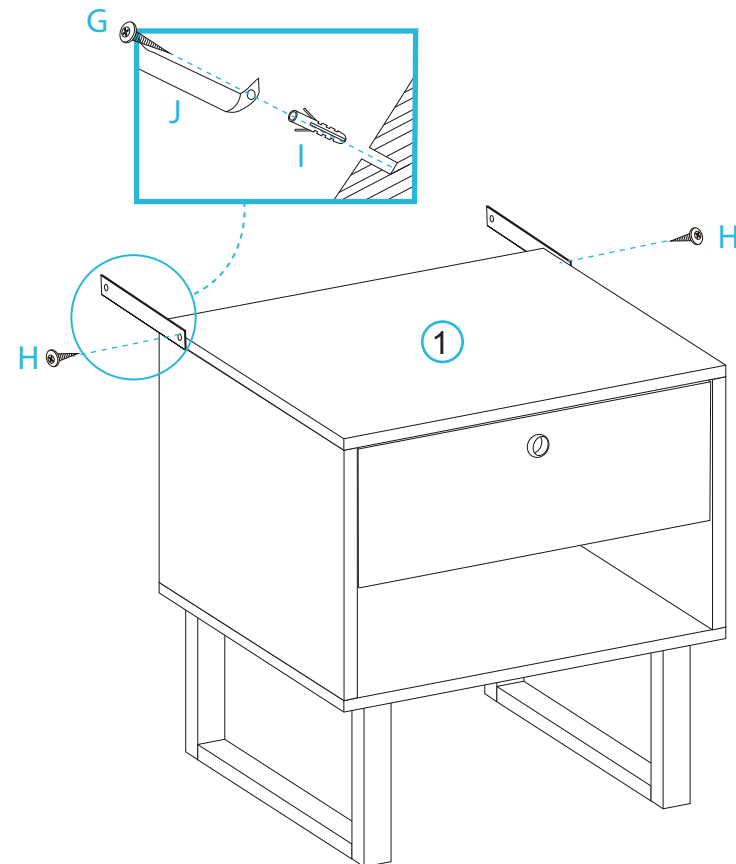
mocka

9



Insert the drawer as shown, ensuring it slides smoothly and easily along the rails. Once assembled lift the furniture into place, do not drag.

10 Safety Straps



Move the unit into the desired location up against a wall. Attach 2x wall straps (J) to the back sides of panel [1] and secure with 2x 14mm screws (H). Fasten to wall using 2x wall anchors (I) and 2x wall screws (G). Ensure unit is balanced and steady before use. You're done, enjoy!